
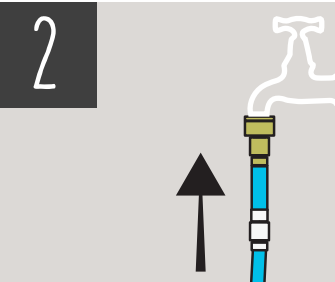


# SET UP - SINGLE BOTTLE REFILL OR DRINKING FOUNTAIN

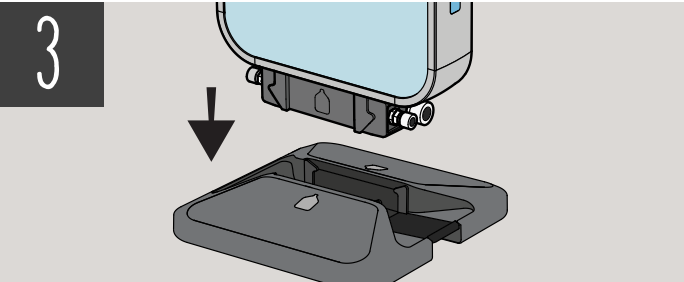
**1** Check tap for pressure and clean water.



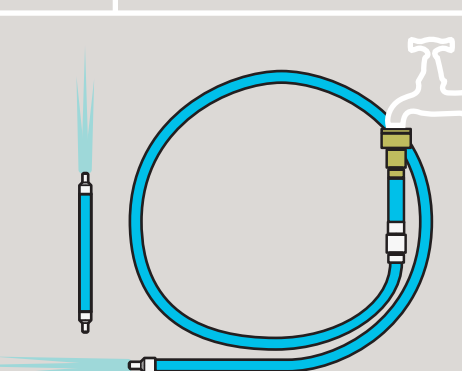
**2** Connect the tap adapter and drinking hose.



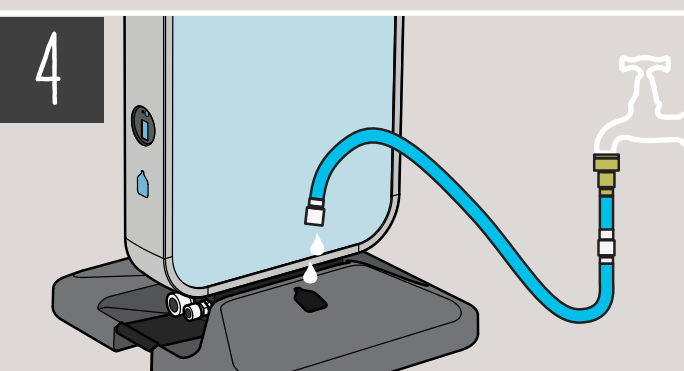
**3** Choose suitable location and position the base. Lower the unit in to the base so it clips in place.



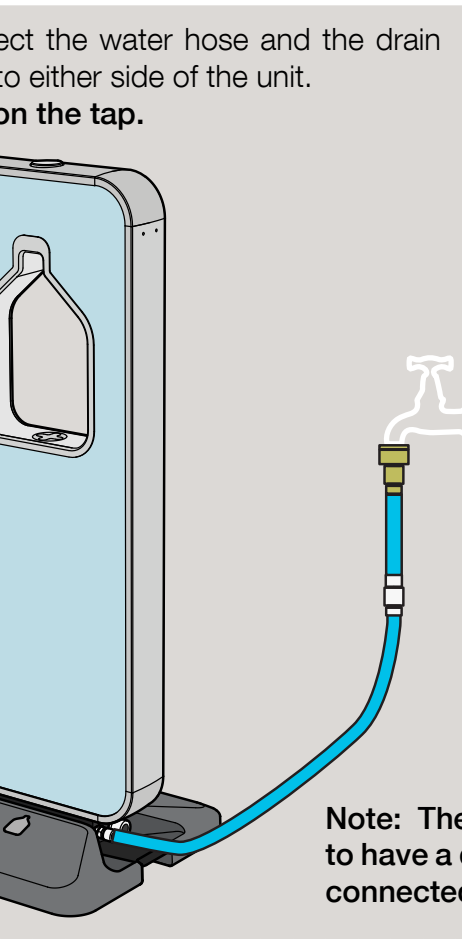
**4** Flush all the hoses with clean water prior to connecting to the unit. As a guide 10sec per 10m hose. If the hoses appear dirty do not use.



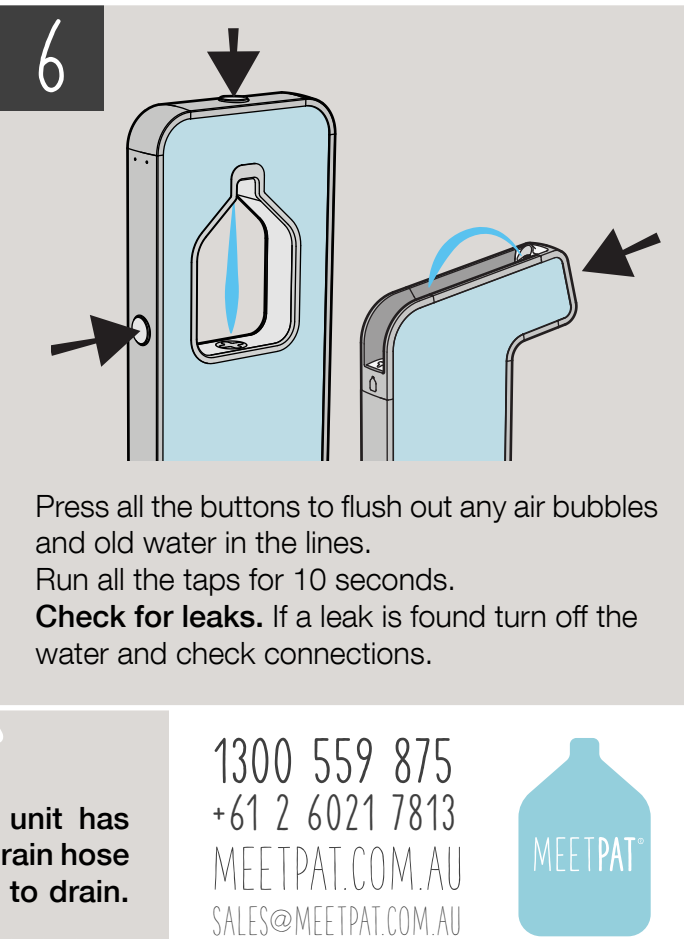
**4** Option: If needed you can fill the base with water for more stability.



**5** Connect the water hose and the drain hose to either side of the unit. Turn on the tap.



**6** Press all the buttons to flush out any air bubbles and old water in the lines. Run all the taps for 10 seconds. Check for leaks. If a leak is found turn off the water and check connections.



**Note: The unit has to have a drain hose connected to drain.**

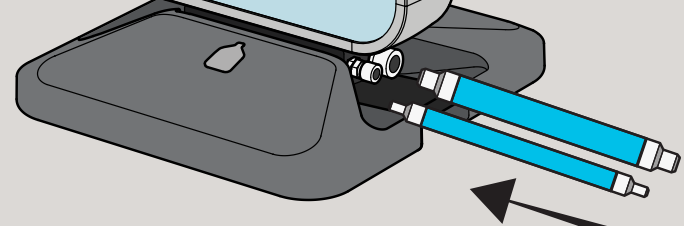
1300 559 875  
+61 2 6021 7813  
MEETPAT.COM.AU  
SALES@MEETPAT.COM.AU



# SET UP - MULTIPLE UNITS

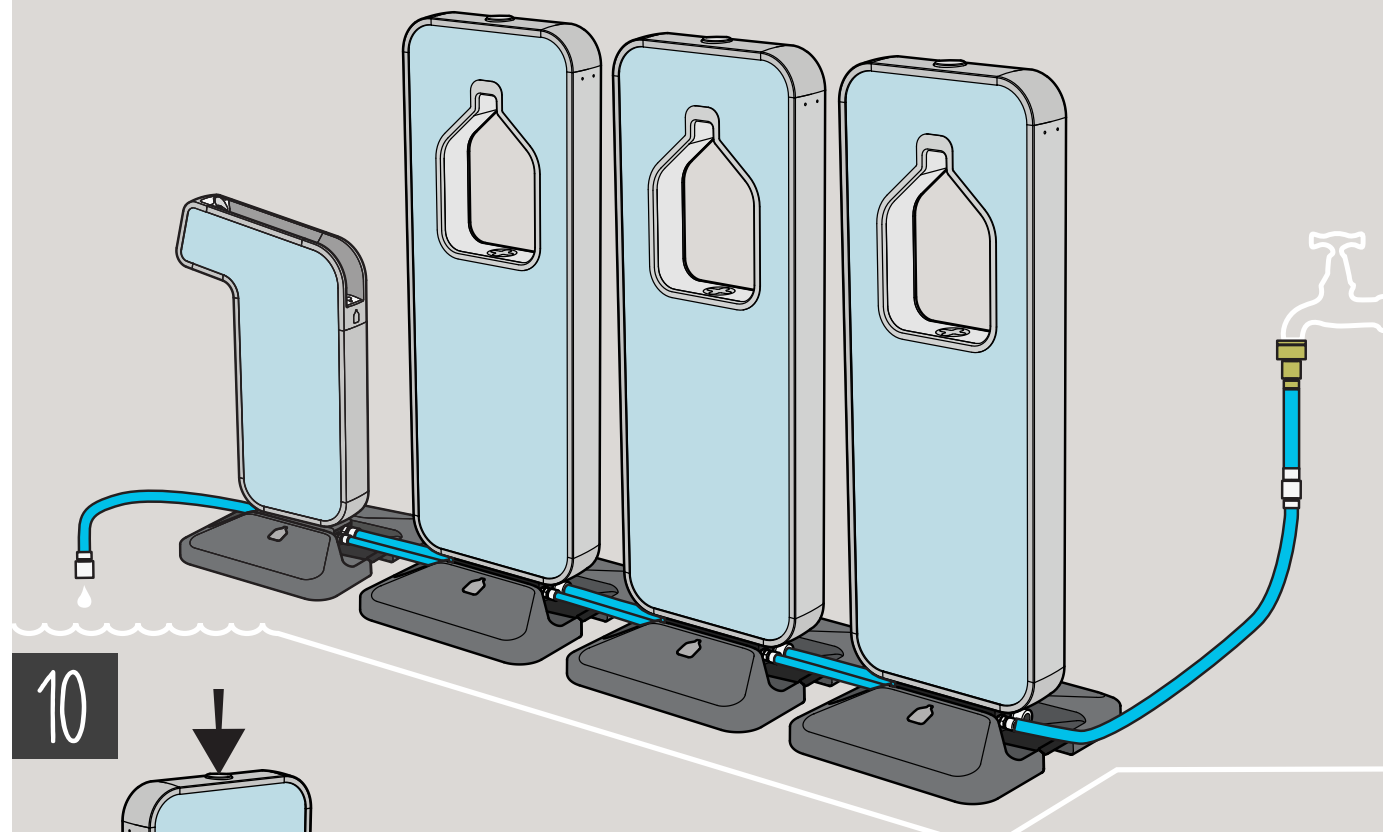
**7** Follow steps 1-4.

**8** Use the joiner hoses to link the drain and water lines together between the units.



**9** Connect the water hose from the tap to the first or last unit. Connect the drain hose to the first or last unit. Turn on the tap. Note: The unit has to have a drain hose connected to drain.

**10** Press all the buttons to flush out any air bubbles and old water in the lines. Run all the taps for 10 seconds. Check for leaks. If a leak is found turn off the water and check connections.



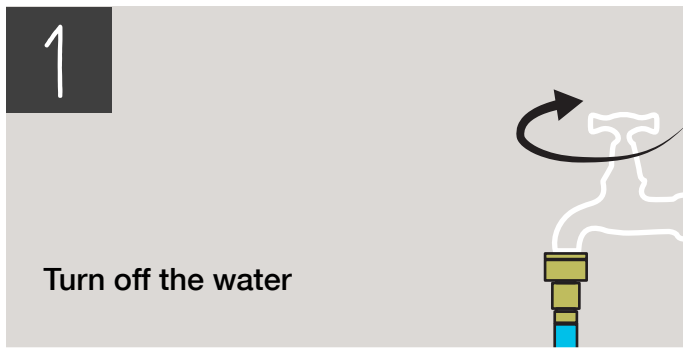
## READ THIS BEFORE SETTING UP

Here at **Meet Pat** we are very safety conscious. We design and manufacture water related products with the safety of you, the user, foremost in mind. In addition, we ask that you exercise a degree of care when using any Meet Pat product and adhere to a common sense approach.

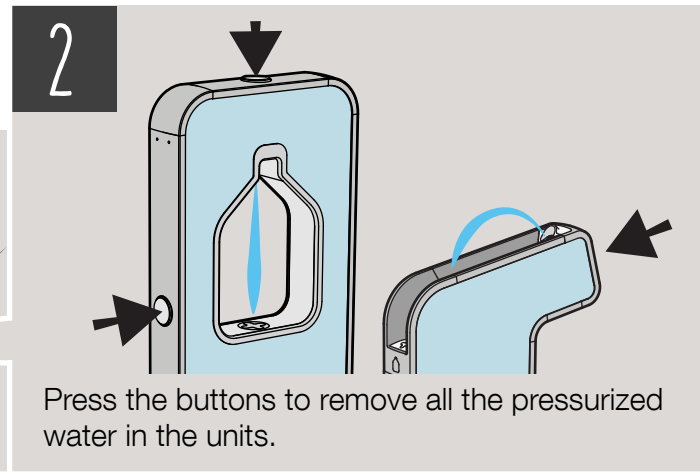
- Do not set the units up near live exposed electrical connections or wiring.
- Do not set up in high wind areas.
- If the hoses pass over traffic areas use approved hose trip covers.

Please refer to our website [www.meetpat.com.au](http://www.meetpat.com.au) for full safety, setup and warranty info.

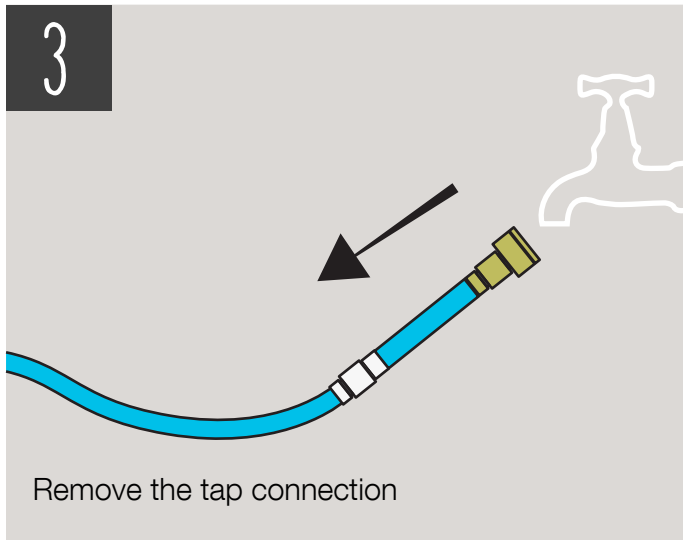
# PACK DOWN



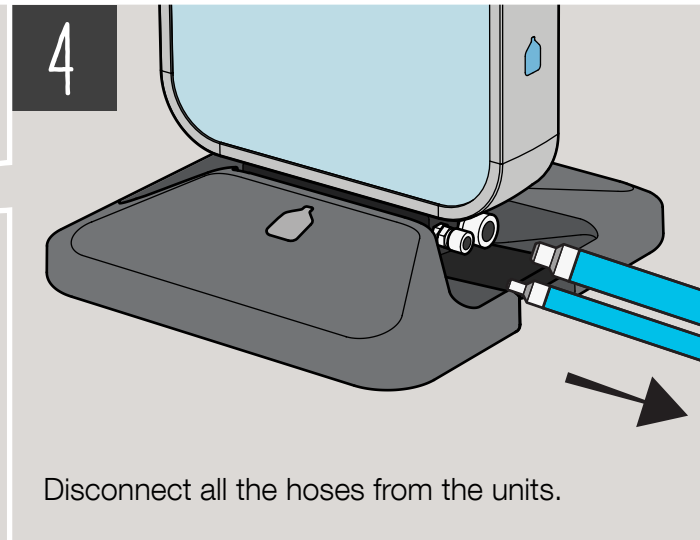
Turn off the water



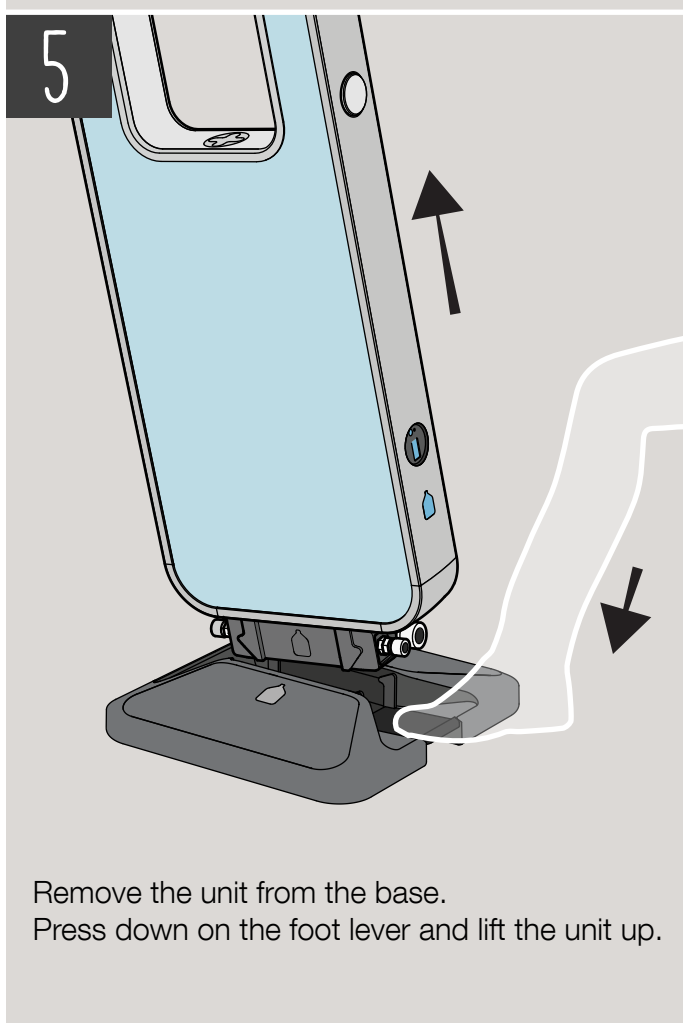
Press the buttons to remove all the pressurized water in the units.



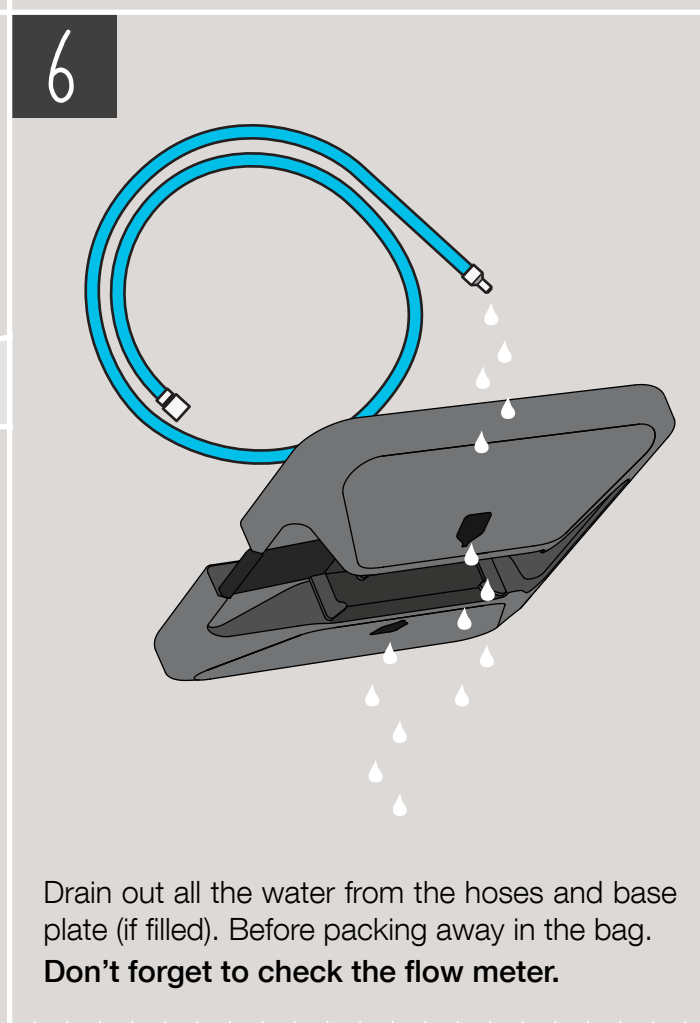
Remove the tap connection



Disconnect all the hoses from the units.

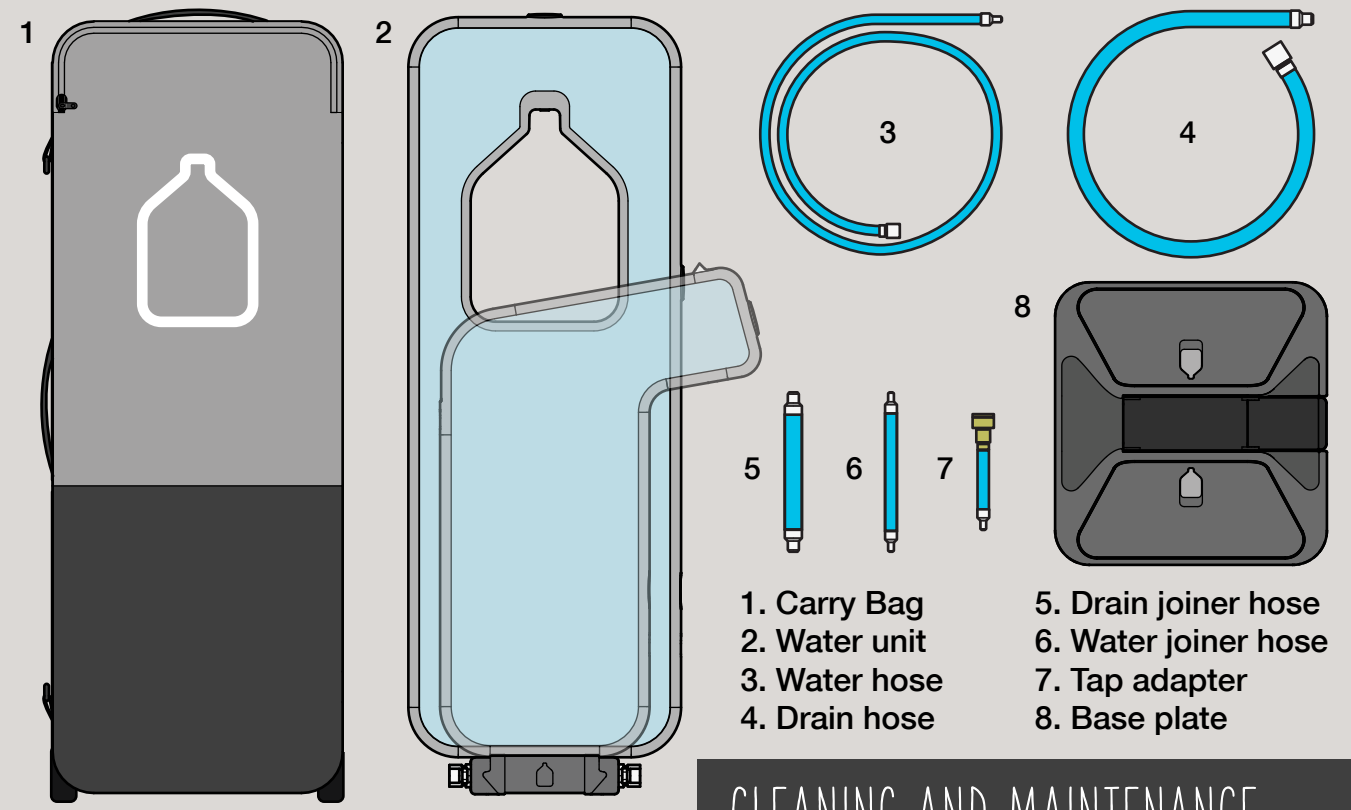


Remove the unit from the base. Press down on the foot lever and lift the unit up.



Drain out all the water from the hoses and base plate (if filled). Before packing away in the bag. **Don't forget to check the flow meter.**

# WHAT YOU SHOULD HAVE



- 1. Carry Bag
- 2. Water unit
- 3. Water hose
- 4. Drain hose
- 5. Drain joiner hose
- 6. Water joiner hose
- 7. Tap adapter
- 8. Base plate

# CLEANING AND MAINTENANCE

It is very important to keep your MeetPAT units in the best possible condition. Keep the units clean and stored in a dry cool place.

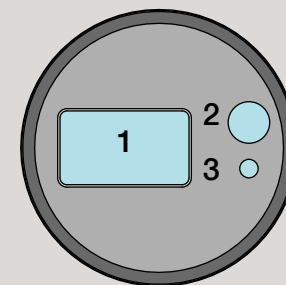
**Before use:** Check all hoses, connections and nozzles for dirt, grime, mold or other contaminants.

**After Use:** Drain all water from the units and hoses. Wipe down all surfaces and check for damage.

**Maintenance:** 5000 liters or approx. 6-12 Monthly hoses and units should be flushed with a cleaning solution. MeetPAT offers cleaning kits for this.

**Carbon Water:** Unless requested each unit has a carbon cartridge installed to create tastier water. This needs to be replaced after 1 year or 5000 liters. MeetPAT offers replacement cartridges and maintenance services.

# FLOW METER



- 1. Display
- 2. Display Button
- 3. Reset Button

Each MeetPAT unit is fitted with a digital flow meter. This is set to count up the amount of liters that have flowed through the unit. This is important so you know when to change the carbon cartridge (if in the unit), when a service is due and provide valuable marketing data.

**Use:** Press the display button to show the liter count up. The display will automatically turn off after a few seconds.

**Reset:** Press the display and reset button together

**Batteries:** Graphic panel removal is required to replace the 2 AA batteries. The meter will beep and display a battery symbol when batteries need changing.

1300 559 875 +61 2 6021 7813  
MEETPAT.COM.AU SALES@MEETPAT.COM.AU

